

SURREALIST JEWELS 101



LOUISA GUINNESS GALLERY

SEPTEMBER 25TH - NOVEMBER 7TH, 2025

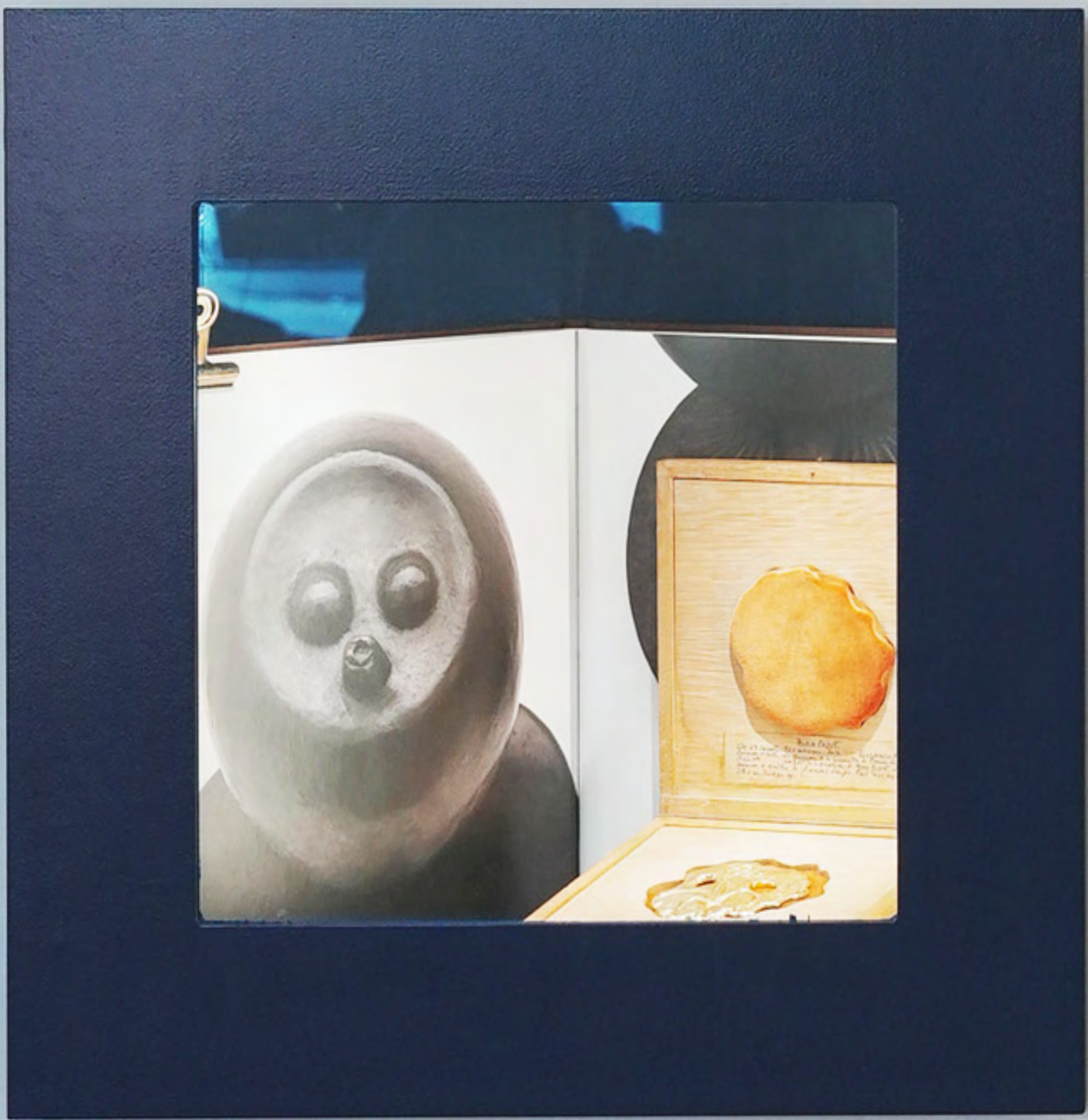
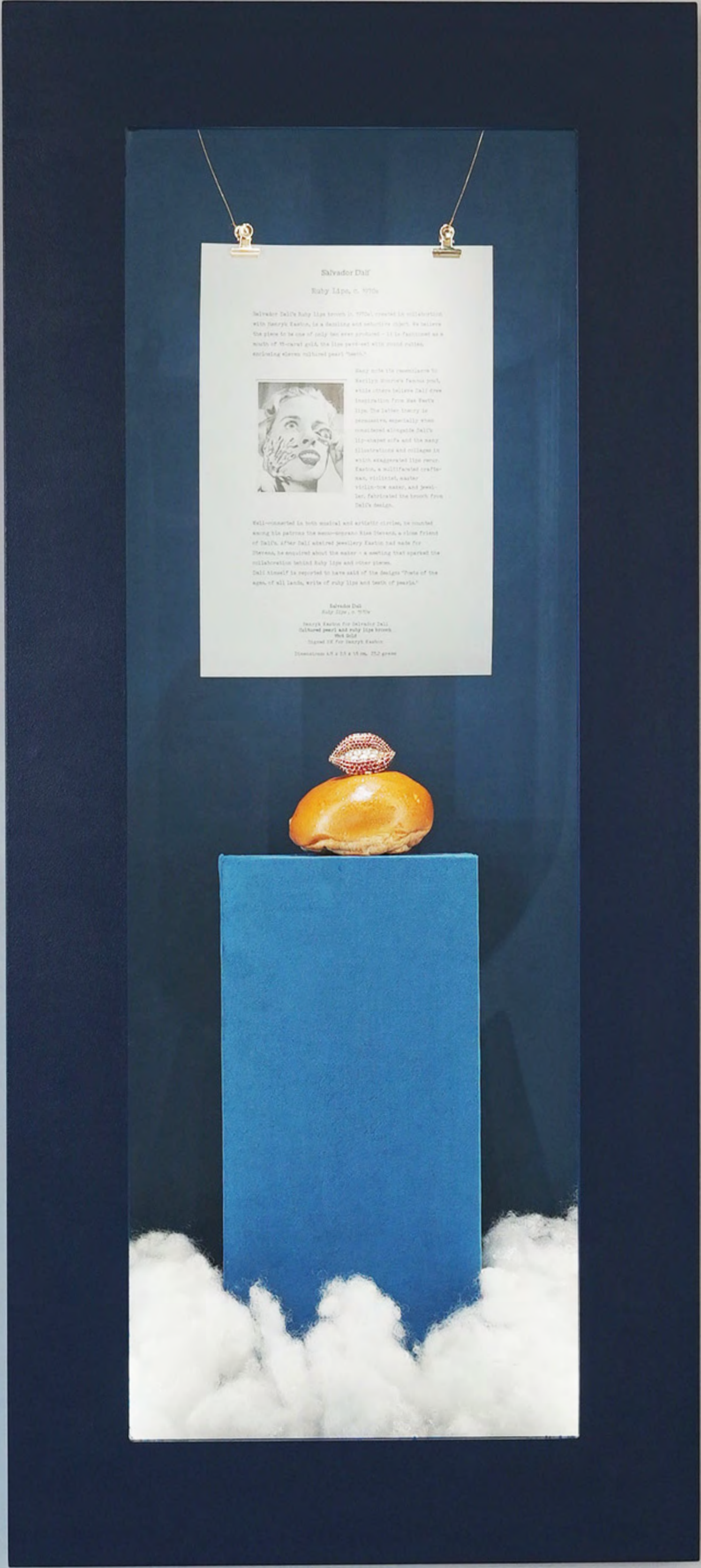
Louisa Guinness Gallery is proud to present Surrealist Jewels 101, curated and commissioned by Louisa Guinness.

Coinciding with the 101st anniversary of the movement, this show explores surrealism in jewellery, showcasing unique pieces that blur the line between art, imagination, and adornment.

The exhibition situates historic works by Salvador Dalí, Man Ray, Claude Lalanne, and their contemporaries alongside current jewellers whose practice reimagines Surrealism for the present. Designers such as Hannah Martin, Castro Smith, Wen ju Tseng, Martina Kocianova, Veronika Fabian, Jiayang He, George Hornemann, Punch Suwannakit, and Roei Palant extend the Surrealist movement into new material and cultural contexts. Their works underscore the adaptability of Surrealist strategies, demonstrating how its themes continue to resonate within the language of contemporary design.

By bringing surrealist masters into dialogue with current designers and makers, Surrealist Jewels 101 underscores the continuity of Surrealist thought across generations. This curatorial strategy affirms that today's designers are not positioned in the shadow of the past, but are active in expanding Surrealism's vocabulary into new contexts. Here, Surrealism is not approached solely as a historical movement, but as a progressing one that continues to shape the possibilities of artistic expression in the twenty-first century.

The pieces presented do not simply decorate the body; they invite the wearer and the viewer into a space where materiality collides with imagination, and where the boundaries between art and life dissolve.



SURREALIST MASTERS

ARMAN

(1928-2005)

As a founding figure of Nouveau Réalisme, the French artist Arman redefined sculpture by turning to the reality of everyday objects. His *Accumulations* of 1959, in which manufactured items were densely packed into transparent boxes, reflected both the fascination and critique of consumer culture. One of Arman's most recognisable motif is the dissected violin. First translated into jewellery in the late 1970s as a series of gold brooches, this recurring form continued to evolve as multiples and wearable works throughout his career. In these pieces, the familiar instrument becomes both fragmented and reimagined, embodying the artist's enduring interest in transforming the ordinary into new contexts.

ARMAN
Violin Brooch

Artists's Signature
Stamped with maker's mark and French
Assay marks on the reverse, edition 2/2
18ct gold
64mm x 32mm
20 grams





ARMAN

Watch Pendant

Artist's Signature

Stamped with maker's mark and

French assay marks

18ct gold

Dismantled watch set in resin

40mm x 40mm x 15mm

51 grams

CÉSAR BALDACCINI

(1921-1998)

During a visit to a scrap metal yard in 1960, the French sculptor César Baldaccini observed a hydraulic compressor in action, inspiring him to create his renowned 'Compression' sculptures.

These sculptures involved crushing vehicles and scrap metal into solid columns.

Later in his career, Baldaccini applied the same technique to jewellery, on a much smaller scale. Clients would bring him their unworn or broken jewellery to be transformed into wearable sculptures. This process compressed sentimental, unused jewellery into abstract, wearable art, giving new life to pieces and hiding the story of their original being. Each transformed piece carried a unique personal history and was given a new life and meaning, now embodied in an abstract pendant.



CÉSAR

Compression Pendant

Artist's Signature

Comes with original box &
Cerification

Steel metal

56.5mm x 18mm x 18mm

62 grams



CÉSAR

Compression Pendant, c. 1970s

Artist's Signature

Stamped 750

18ct gold, diamonds & sapphires

56mm x 30mm x 12mm

103 grams

CLAUDE LALANNE

(1925 - 2019)

Claude Lalanne is renowned for her alchemical transformation of the natural world into sculpture, she blurred the line between art, nature and adornment. Working alongside her husband, François-Xavier Lalanne, she developed a distinctive surrealist language - sheep graze galleries, cabbages have chicken feet, and delicate flora reappear as fantastical furniture.

Claude Lalanne's jewellery extends this vision on an intimate scale - the unexpected becomes wearable.



CLAUDE LALANNE

Collier Ronce, c. 1970-80

Signed and numbered

Polished bronze doré

Edition of 250

1015mm length

186 grams



CLAUDE LALANNE

Doigt Necklace, 1980

Monogrammed CL and stamped 'LALANNE'

Coppered bronze

155mm x 150mm

172 grams

JEAN FILHOS

(1921-2002)

Trained as an architect before turning to sculpture, Jean Filhos found his voice in intimate, small-scale works. Encouraged by François Gennari, whose gallery on Rue Bonaparte championed jewellery sculptors, he developed a practice that moved fluidly between abstraction and figuration, often imbued with a subtle erotic charge. In works such as *Erotikchain*, Filhos aligns with Surrealism's exploration of desire and transformation, reimagining jewellery as both adornment and provocation.



JEAN FILHOS

Erotikchain, c. 1970s

18ct gold
780mm length
58 grams



LEONORA CARRINGTON

A central figure of Surrealism, Leonora Carrington created fantastical worlds infused with myth, alchemy, and personal symbolism. Her paintings and writing explores themes of transformation, magic, and the unconscious, often foregrounding female figures in visionary, dreamlike settings.

Carrington's legacy endures as that of a radical storyteller who reimagined Surrealism across mediums, from monumental paintings to the scale of the body. Her fantastical jewellery, consisting of pendants and brooches are rendered in gold and precious stones - echoing the dreamlike figures of her canvases.



LEONORA CARRINGTON

Lizard, 2010

Stamped 'Leonora Carrington 23/100'

Edition of 100 (#23/100)

925 Silver, 24ct gold sheet and precious stones

90mm x 30mm x 5mm

13.5 grams

LEONORA CARRINGTON

La Hija del Minotauro, 2010

Edition of 100 (#23/100)

925 Silver Technique 24k Gold Sheet and Precious
Stones

74mm x 45mm x 10mm

23 grams



MAN RAY

(1890 - 1976)

While best known for his pioneering contributions to Dada and Surrealism, Man Ray worked across photography, painting, film, and object-making, continually challenging the boundaries of visual expression.

In the 1960s and 70s, Man Ray created several pieces in collaboration with Italian jeweller and friend GianCarlo Montebello - some based on earlier designs. The known extent of their collaboration includes seven works: Le Trou, The Oculist, Optic Topic Mask, La Jolie, Hommage, Pendantif-Pendant earrings (of which there were several versions), and Les Amoureux.



MAN RAY

Les Amoureux Necklace & Brooch, c.1970

Artist's signature and maker's mark

Reference number '6N3' and 'K18'

18ct gold removable pendant with pin on reverse
(to be worn as a brooch) on torque.

Edition of 12 executed by GEM - Montebello

Lips: 25mm x 95mm

34 grams



MAN RAY

Hommage, 2013

A continuation of the edition started in 1973,
executed in 2013

Signed and numbered '1973 Man Ray' and
Stamped with with maker's mark 'GM'

18ct green & red gold

Edition of 12 executed by GEM - Montebello

86mm x 63mm x 3mm

36 grams

MAX ERNST

(1891 - 1976)

A key figure in the birth of Surrealism, Max Ernst challenged logic with dreamlike imagery and invented techniques that reshaped modern art. Moving between painting, sculpture, and poetry, Ernst fused the subconscious with the symbolic in strange, often unsettling forms.

Though separated by medium and decades, both Ernst's artworks and jewellery channel his fascination with the irrational and the totemic. His pendants are face-like relics, as if unearthed artefacts from his subconscious.



MAX ERNST

Grande Tête Pendant, c.1971

Stamped with master goldsmith hallmark (François and Pierre Hugo), state hallmark (French), reference number '1736', and hallmark signature of the Artist. 23ct gold medallion with suspensory loop on reverse & wooden case

Edition of 6 + 2 AP

8mm x 140mm x 141mm

168 grams



MAX ERNST

Tête aux Seins pendant, c.1961

Stamped with master goldsmith hallmark (François Hugo), state hallmark (French), reference number '1458', stamped 'Exemplaire d'Auteur' and hallmark signature of the Artist

23ct gold medallion with suspensory loop on reverse
& wooden case

Edition of 8 + 2 AP

82mm x 77mm x 18mm

68 grams

MIGUEL BERROCAL

(1933 - 2006)

A master of sculptural metamorphosis, Berrocal was a Spanish sculptor celebrated for his intricate puzzle sculptures.

Rooted in figuration and abstraction, the viewers are invited into a surreal dialogue between body, object and hidden interior worlds. Designed to be dissembled and reconfigured, often concealing miniature artworks or jewellery, his works blur boundaries - between art and ornament, intimacy and monumentality.



MIGUEL BERROCAL

Micro David-off Erotic puzzle

Sculpture Pendant

Stamped 750

18ct gold modelled as a man's torso composed of connecting pieces which disassemble to reveal a phallic ring.

Anchor link chain with original guarantee leaflet

Edition of 5000

Pendant : 62mm length

Chain : 905mm length

172 grams

NIKI DE SAINT PHALLE

(1930 - 2002)

De Saint Phalle's art, and her jewellery, draws on the surreal to reimagine form, identity, and play.

Niki De Saint Phalle began making jewellery in the early 1970s in collaboration with Giancarlo Montebello, a fellow artist and close friend in Paris. De Saint Phalle would provide drawings of her designs, which they would refine together - discussing scale, execution, and intricate details.

Her jewellery is particularly notable for its complex enameling, requiring multiple firings at different temperatures for each colour.



NIKI DE SAINT PHALLE

Assemblage Necklace, 1974/2015

Signed 'Niki de Saint Phalle, 1974', numbered,
stamped with archive number, 750 and makers
mark 'GM', with original suede case, Edition of 3
18ct gold and enamel with 18ct gold choker

Pendant: 130mm x 80mm

84 grams

NIKI DE SAINT PHALLE

*Nana with a Bag Brooch & Necklace,
1974/2015*

Archive reference NS/10 signed 'Niki de Saint Phalle,
1974' and numbered, stamped with archive
number, 750 and makers mark 'GM'

18ct gold and enamel with articulated handbag and 18ct
gold choker, in original suede box. Edition of 3 + 3 AP

Pendant: 80mm x 45mm

54 grams



SALVADOR DALÍ

(1930 - 2002)

As one of the most famous surrealists of all time, it seems natural that Dalí should make jewels; his familiar dripping clocks and surrealist eyes lend themselves perfectly to the subject. The story is that Dalí created detailed drawings and designs for twenty-two pieces of jewellery beginning in 1941.

In Dalí's jewellery, gold, platinum, precious stones and other precious materials are combined to give shape to hearts, lips, eyes, plants and animal forms, religious and mythological symbols and anthropomorphic shapes.



SALVADOR DALÍ

Ruby Lips Brooch, c. 1970

Henryk Kaston for Salvador Dalí cultured pearl and
ruby lips brooch

Signed 750 and HK for Henryk Kaston

Circular-cut rubies and cultured pearl teeth in
18ct gold

47mm

23 grams



SALVADOR DALÍ

The Eye of Time Brooch, c. 1949/58-9

The Eye of Time, Conceived in 1949 and executed 58-9
Inscribed 'Dali' (on the dial).

Platinum, diamonds, ruby and blue enamel brooch with
a mechanical watch movement

70mm length

232 grams

CONTEMPORARY JEWELLERS & ARTISTS



CORA SHEIBANI



CASTRO SMITH



DELPHINE BOEL



GAVIN TURK



GEORGE HORNEMANN



HANNAH MARTIN



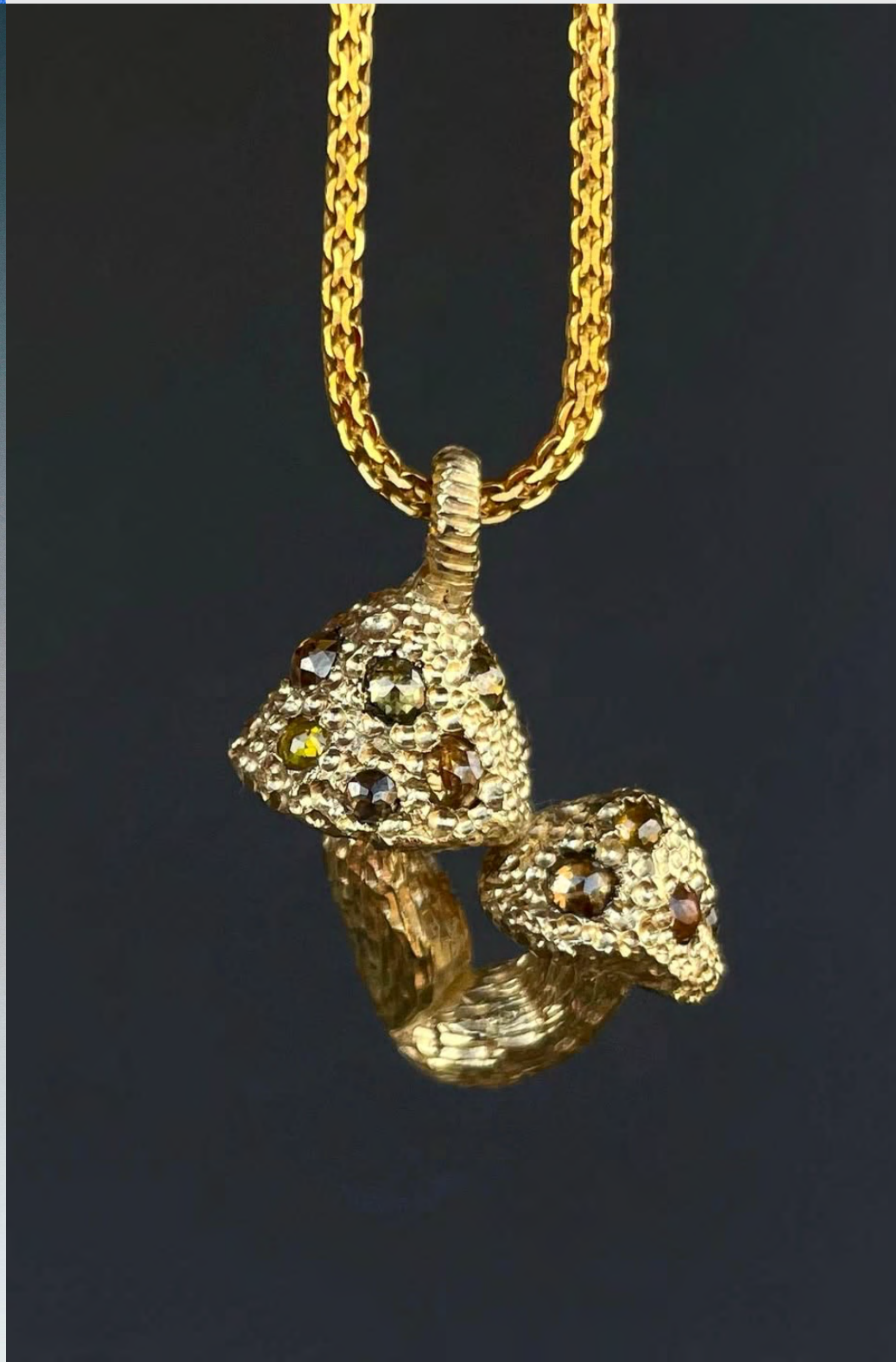
JIAYANG HE

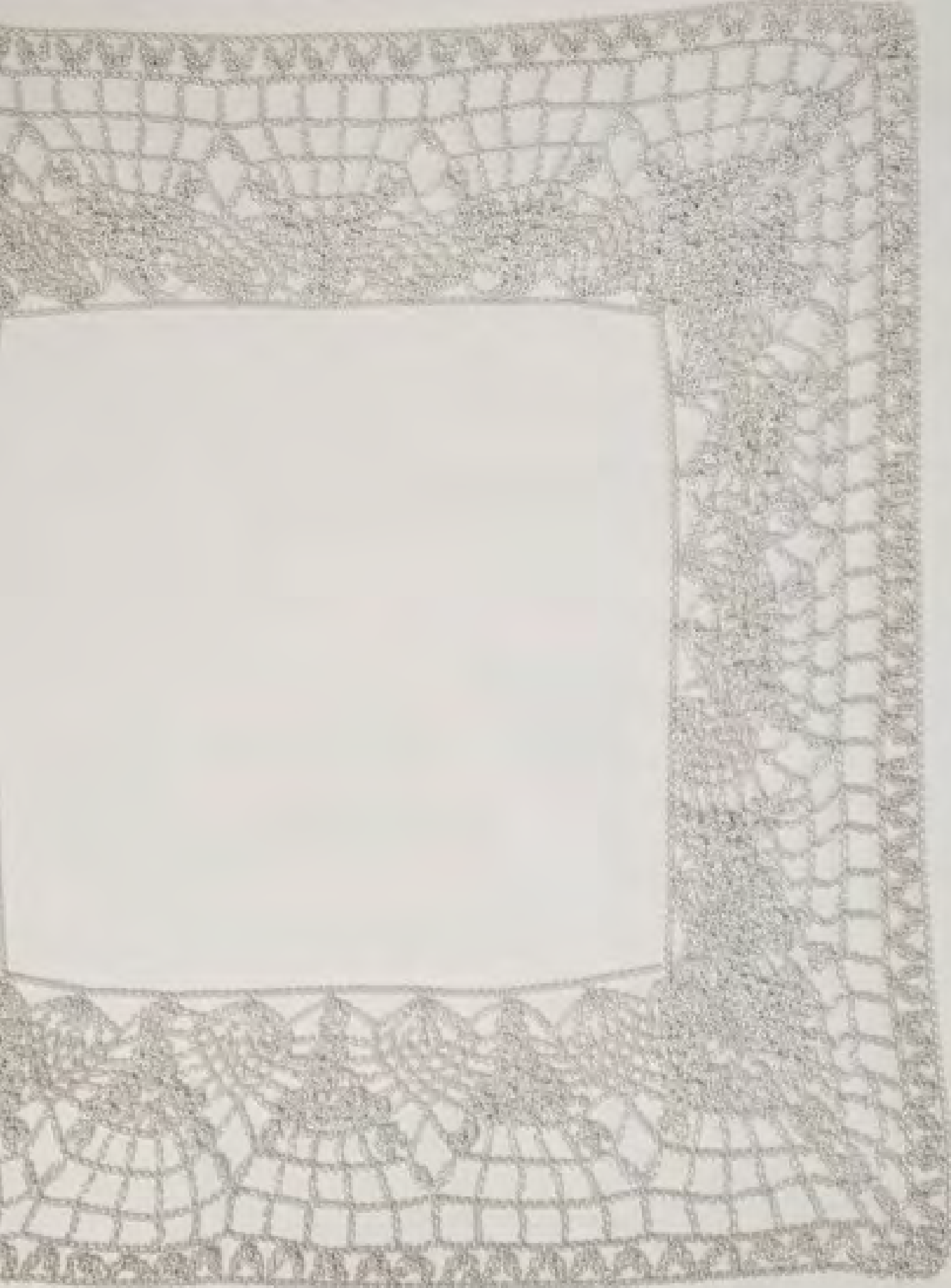


LUZ CAMINO



MARTINA KOCIANOVA





PUNCH SUWANNAKIT



MICHAEL CRAIG-MARTIN



ROEI PALANT



SUE WEBSTER & TIM NOBLE





STEPHEN WEBSTER



VERONIKA FABIAN



WEN JU TSENG



LOUISA GUINNESS GALLERY

104 Kensington Church Street
London, W8 4BU

TEL | 020 7494 4664

info@louisaguinnessgallery.com

[PLEASE CLICK HERE TO VIEW ALL WORKS](#)