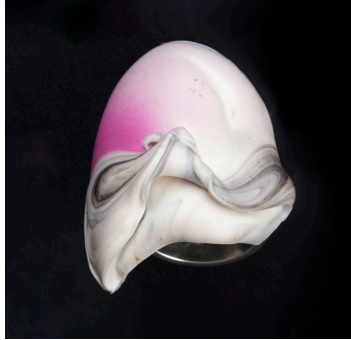


LOUISA GUINNESS GALLERY

..... AUGUST 2014

LOUISA GUINNESS GALLERY PRESENTS NEW WORK BY JASON
MARTIN AND GAVIN TURK AT PAD LONDON

15 -19 OCTOBER 2014



Jason Martin, Untitled ring, 2014, unique Image 1 and 3) and Gavin Turk, Bitten Biscuit, Edition of 10

Louisa Guinness Gallery is delighted to announce that they will again be exhibiting at PAD London in October this year.

The gallery will be presenting a selection of work by contemporary artists including a debut project with painter Jason Martin and new work by Gavin Turk, Anish Kapoor, Claude Lanne and Tim Noble and Sue Webster.

Jason Martin's remarkable series of rings, bracelets and pendants perfectly capture the depth of colour and textured, sculptural-brushwork for which his paintings are known. Each unique piece is made from a swirl of pigment, giving the impression of an inexplicably static paint-fleck resting on the wearer's body.

Like his sculpture, Turk's most recent jewellery project finds beauty and humour in the mundane. The artist has created a series of pendants in the form of Rich Tea biscuits, which, with a characteristically whimsical touch, are missing a large bite. These are available in 18k white, yellow and rose gold and in two sizes (2cm and 3cm diam.)

We will also be presenting work by Conrad Shawcross, Mariko Mori, Anish Kapoor, Claude Lanne, Tim Noble and Sue Webster, Sophia Vari and Ross Lovegrove.

NOTES TO EDITORS:

The gallery works with today's leading sculptors and painters to create jewellery as well as collecting and dealing in works by master artists.

The gallery opened in May 2003 with its inaugural exhibition '*Past and Present; Jewellery by 20th Century Artists*'. With this show Louisa Guinness departed from her original focus on artist-made furniture into the world of artists' jewels. Since then she has worked on over 18 separate projects with leading contemporary artists.

Each new work is published in a small edition to the highest standard. Most are handmade in London's famous Hatton Garden district or the artist's studio. The ethos behind the jewellery is that it should be treated as wearable sculpture: whilst it is not being worn it is a piece of art independent of function, at home on a coffee table or in a dressing room.

Contact

Press enquiries: cecily@louisaguinnessgallery.com

Louisa Guinness Gallery
45 Conduit Street
London
W1S 2YN
T: (0) 207 494 4664

Open 10am – 6pm Monday to Friday.

PAD
LONDON
ART+DESIGN



*Tim Noble and Sue Webster
Fucking Beautiful Necklace*



Anish Kapoor, Water Pendant



*Claude Lalanne, Bague
en Fleur*

