

LOUISA GUINNESS GALLERY

..... OCTOBER

THE ARTIST AS JEWELLER: INTERPRETING STONE

ARTISTS CHALLENGED TO CREATE JEWELLERY FROM NON-
PRECIOUS MATERIALS FOR NEW SHOW AT

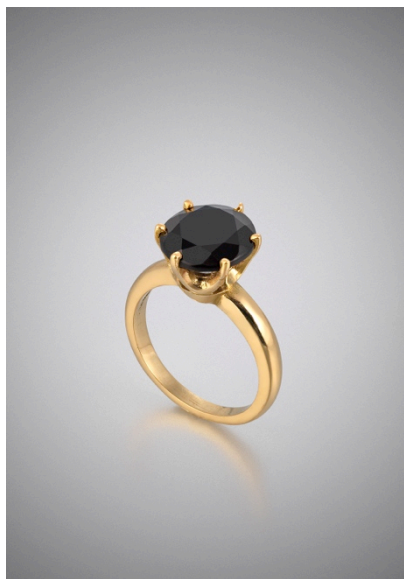
LOUISA GUINNESS GALLERY



Louisa Guinness, founder of Louisa Guinness Gallery, will be launching an exhibition of new jewellery made by contemporary artists who have been challenged to create beautiful jewellery using stone instead of traditional gems. The show, entitled *The Artist as Jeweller: Interpreting Stone* will run at Louisa's new gallery space on Conduit Street, Mayfair from 20th November until 20th December 2013.

Louisa has invited some of the world's best contemporary artists including Anish Kapoor, Sophia Vari, Tim Noble and Sue Webster, Michael Craig Martin, William Ehrlich, Gary Hume and Ron Arad to work in materials such as stone and glass to explore the creative potential and properties of different materials. These will be shown along side 20th century pieces by artists such as Man Ray, Jesus Rafael Soto and Alexander Calder who also chose to incorporate non precious stone in their work, including lapis lazuli, agate, malachite and glass.

She says: *“We have invited artists to make jewellery using common-place rather than precious stones including marble, alabaster or even pebbles. We want the jewellery to be judged for its artistic merit and not its material content. Greek artist Sophia Vari, for example, has created a unique pendant from marble (pictured above), whilst Tim Noble and Sue Webster have played with mudlarking and crown jewels, to create a silver cast raven’s claw clasping a stolen pebble. Meanwhile, New York based artist Rob Wynne has fashioned a ring using a stone from his friend’s fish tank (pictured below). The stone has been cut as you would a diamond or sapphire and set in 18ct gold. The result is a whimsical piece that glows with a bluish hue: it is beautiful for the simplicity of concept and design”*



The exhibition of this new collection will challenge the conventions of traditional jewellery making. She says: *“In this show the artistic merit of the piece, over its materials, will determine its value”*.

Louisa Guinness Gallery is the first gallery in the world to exclusively show jewellery made by artists. The new gallery space at 45 Conduit Street opened in London’s Mayfair this autumn reflects a growing interest amongst art collectors for jewellery made by artists. Not only do these pieces offer a collecting opportunity but they can be worn as a piece of statement jewellery or enjoyed as miniature sculptures. *“We are the first London gallery to deal exclusively in artist-made jewellery,”* she says. *“We don’t work with jewellers, only artists whose primary medium is either painting or sculpture. We offer artists a new form in which to express themselves and at the same time challenge them to adapt their artistic language to the demands of scale and function.”*

www.louisaguinnessgallery.com

Ends

For UK press enquiries please contact:

CAMRON PR

Rosalind Freeborn

Rosalind.Freeborn@camronpr.com

+44 (0)20 7420 1710

For International press enquiries please contact:

CAMRON PR

Guillaume Giraud

guillaume.giraud@camronpr.com

+44 (0)20 7420 1731

NOTES TO EDITORS:

About Louisa Guinness Gallery:

The gallery works with today's leading sculptors and painters to create jewellery as well as collecting and dealing in works by master artists.

Louisa Guinness began working in this area of the art market in May 2003 when she curated her inaugural exhibition '*Past and Present; Jewellery by 20th Century Artists*'. With this show Louisa Guinness departed from her original focus on artist-made furniture into the world of artist's jewels. Since then she has worked on over 16 separate projects with leading contemporary artists.

Each new work is produced in a small edition to the highest standard. Most are handmade in London's famous Hatton Garden district or the artist's studio. The ethos behind the jewellery is that it should be treated as wearable sculpture: whilst it is not being worn it is a piece of art independent of function, at home on a coffee table or in a dressing room.

In the decade since the gallery's inception, Louisa Guinness has established herself as the world's leading dealer in artist's jewellery.

Artists shown by Louisa Guinness Gallery

Alexander Calder

Anish Kapoor

Antony Gormley

Bill Woodrow

Claude Lalanne

Conrad Shawcross

Cornelia Parker

Damien Hirst

Dinos Chapman

Ed Ruscha

Fausto Mellotti

Gary Hume

Gaston Novelli

Gavin Turk

George Rickey

Grayson Perry

Hans Richter

Heinz Mack

Jeff Koons

Jesus Rafael Soto

Keith Haring

Kenny Scharf
Frank Stella
Lucio Fontana
Man Ray
Marc Quinn
Mariko Mori
Max Ernst
Meret Oppenheim
Michael Craig Martin
Mike Chavez-Dawson
Niki de Saint Phalle
Not Vital
Pablo Picasso
Peter Blake
Pol Bury
Rob Wynne
Ron Arad
Stuart Haygarth with Sian Evans
Sam Taylor-Wood
Sophia Vari
Tim Noble and Sue Webster
William Ehrlich
William Turnbull
Yinka Shonibare

New Gallery Details:

Louisa Guinness Gallery
45 Conduit Street
London
W1S 2YN
+44 (0)207 494 4664